

# AGROKERI

## Rönkhasító

### Kézikönyv

# AGRIZAN<sup>®</sup>



AGR<sup>®</sup>  
PARTS

## SAFETY INFORMATION



1) Training and preparation

2) Range of use

3) Operation according to stipulations

Begin operation after helpers send woods to the operation area and leave there. Danger can be caused by the multi-person operation.

4) Protecting overalls

Before operation, do wear and tighten all the protective overall, glasses, gloves and ear-protection;

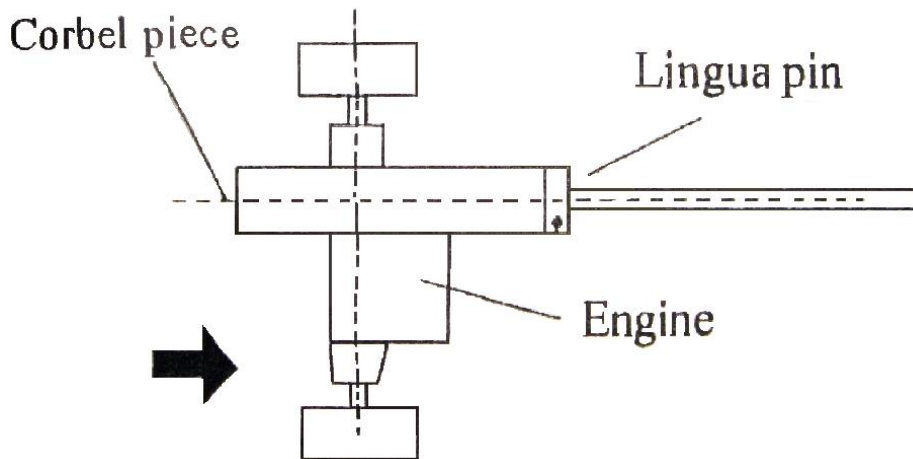
5) Input woods

Both ends of the woods should be cut as equal as possible at first.

6) Operation steps

Don't operate out side safe area.

Don't put hands of feet between voussoirs or between indenters. Or there's extreme danger.



7) Assure safe operation ground and environment.

8) Safety of repair and maintenance

Regularly check up and promptly maintain it.

9) Take special care during safe transfer (traction) or backing it.

10) Fire prevention

The type XL-S-001 is equipped with explosive mixture, (except that additional spark arrester is fixed on the air sluice of the engine). Don't operate it on grass or around grass.

11) Hydraulic safety

The hydraulic system and mechanical parts of the wood splitting machine should get carefully checked and maintained, and make sure they are in good situation every. time before the operation. Don't open the cover of the hydraulic oil tank during splitting to avoid any damage caused by hot spurted oil.

Caution: Before operation, you should read and completely understand the manual, which can ensure your own security, or it's possible to cause severe hurting. Anyone who doesn't read the operation manual is not allowed to operate it.



## INSTALLATION DIRECTIONS

Caution: The following directions are for type XL-S-001 and XL-S-002 with 16 tons and 22tons. The two types have almost the same girder specification and cylinder specification.

What's their difference is their traveling ways.

1. XL-S-001 is wheeled traction(Fig 1)

2. XL-S-002 is three-point hitch.(Fig 2)



### **CAUTION**

When installing wood splitting machine, you should read the enclosed picture, component list and installation direction.

**First:** Take out all the parts from the package, check the number scales and assure their fine conditions.

If damaged, please contact their agents or shippers.

**Then:** Stand the girder. There're at least two operators now for safety. Assure the stability of the girder. Take down the pin lock and pin clip from the shaft of the oil tank and penetrate the pin-shaft hole in the middle of the girder.

Operation guide

#### **Step1:** Starting

Importance: During transportation, there's no oil in engine or oil tank. Read the maintenance manual of the engine for reference to know the applicable types engine oil for bent shaft and fuel oil.



### **CAUTION**

Don't operate the machine without oil in hydraulic oil trough.

**Step2:** Hydraulic oil trough should be filled with SAE20 hydraulic oil. If no hydraulic oil, oil for automatic catch gearbox is applicable, but when the temperature is below 32°F, the oil should be changed. The oil used should be clean, because there mustn't be any dust in hydraulic oil trough.



### **CAUTION**

Engine oil is recommended.

When it's over 40°F, use SAE 30W hydraulic oil. Using other multi-grade common oil will increase the consumption. When it's 40°F, SAE30W hydraulic oil can lead to hard starting and engine damaged, so SAE10W-30 or SAE5W-30 hydraulic oil is recommendable. The oil storage is about 5/8 quart (20 ounces/0.61).

#### **Starting steps**

Read operation and maintenance manual of engine for reference to guide your operating wood splitting machine.

(1) Move the control pole to the "FAST" position.

(2) Push the starting fueling charger bulb three times.

Caution: Don't use the starting fueling charger after short-time stop to start the hot machine again.

(3) If fail in starting three times, you should repeat step (1) and (2).

(4) When engine is running, put the control pole in the "FAST" position and accelerator in the "FAST" position to get the biggest power.

(5) If you want to stop the machine, move the accelerator pole to "SLOW" position first and then to "STOP" position.



### **CAUTION**

During starting, the valve in the oil way of the engine should be in "OFF" position.

**Step3:** The limited highest speed now is 1800r/min(without load) when the engine is new from the factory. When splitting wood, the accelerator should be in the max, defined position to get enough horsepower for the pump.

#### **Step4:** Traction

XL-S-001 wood splitting machine is equipped with tyre, connection of hauling truck

(2inch-diameter ball) and a safety chain. Only when safety chain is tied up in the position of fender guard of joint, can the hauling be done.

## **Step5:** Operation



### **WARNING**

When starting the machine, do wear safety glasses.

Danger: Keep hand and feet far away from the indenter, guide board and bottom board.

- 1) Put the wood splitting machine in a clean and level operation area, fix the wheel, check and make sure that the inlet port of the oil tank is on the bottom end of the machine all along.
- 2) Make sure that wood is stably put on the footboard at the direction of the girder.
- 3) Press the valve handle so that the cylinder can bring the voussoir to input the wood and split it, If only one force moment operation can't split the wood completely, draw back the cylinder.



### **CAUTION**

When operating in woods, the exhaust system should be fixed with spark arrester. Read the booklet or consult local authored service center for the details. Please carefully read the "Safety Information" in this manual.



### **IMPORTANCE**

Don't place the valve in the position of "actuate" on end of stroke length or the pump can be damaged. Take special care when splitting wood on the uneven end.

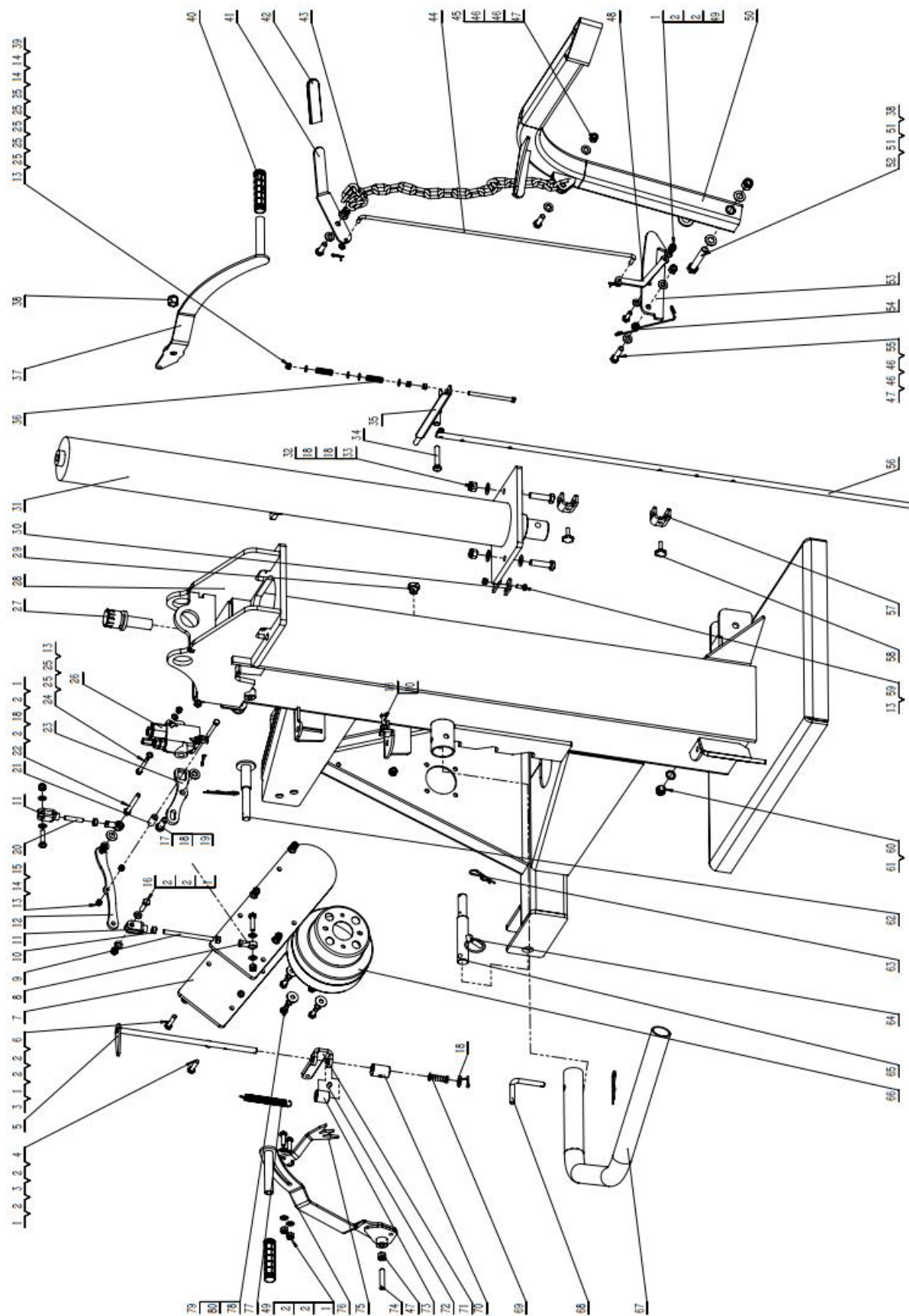
#### **Importance:**

Don't drop the voussoir to the heelpiece to lengthen the lives of hydraulic parts. The voussoir must stop in the position 2 inches away from one stroke length end to follow elementary knowledge of industrial safe operation.

#### **Maintenance**

- (1) Consult the manufacturing factory for the maintenance of the engine.
- (2) Do check the fuel level in the hydraulic trough every time before starting the machine. Operation without enough fuel is very harmful to the machine.
- (3) Change the cleaner after the first 25-hour operation. Change it every 100 hours since then.
- (4) When the voussoir is inactivated or broken, snag or change it.
- (5) Clean the cover of scavenging port every 25 working hours. In dirty environment, increase the times of cleaning. Wash the dusts off with kerosene or liquid detergent.
- (6) Read the sections of repair and maintenance in "Safety information" of this manual.
- (7) All parts for change should meet the specifications required by manufacturing factory.

LSM-22T-01-001



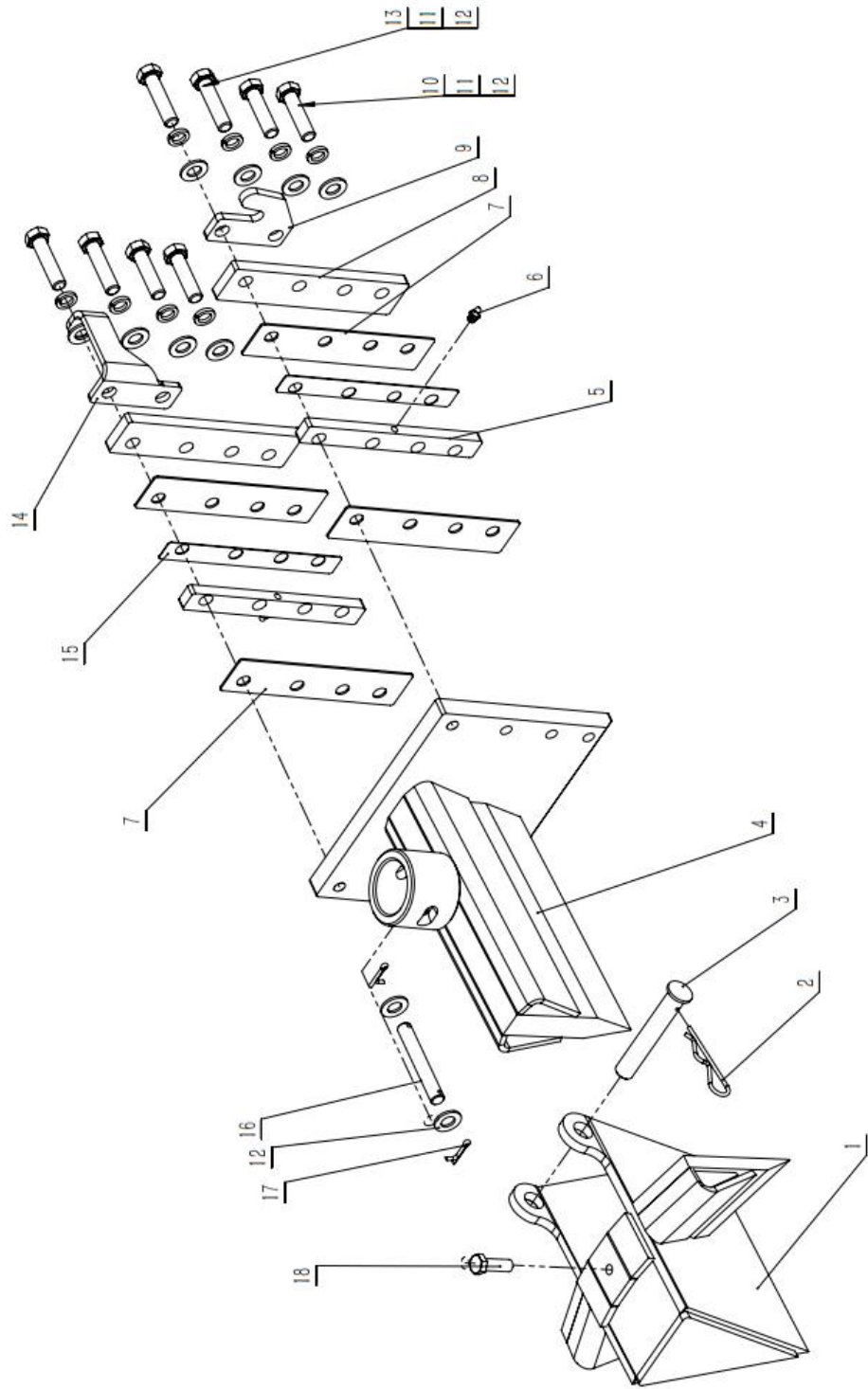
<b>LSM-22T-01-001</b>				
<b>No.</b>	<b>Part No.</b>	<b>Name &amp; Specification</b>	<b>Q'ty</b>	<b>Remarks</b>
1	GB/T 889.1	Lock nut M10	11	
2	GB/T 97.1	Plain washer 10	22	
3	LSM-22T-01-120	Small spacer	4	Color zinc plating
4	GB/T 5783	Bolt M10×45	2	
5	LSM-22T-01-016	Left shaft welding	1	Color zinc plating
6	GB/T 5783	Bolt M10×50	3	
7	LSM-22T-01-121	Chain saw splint	2	
8	SI10T/K	Rod end joint bearing M10 (internal thread)	2	
9	LSM-22T-01-113	Long threaded rod	1	Color zinc plating
10	GB/T 6170	Nut M10	7	
11	LSM-22T-01-124	Joint fork	2	
12	LSM-22T-01-107	Rocker arm	1	
13	GB/T 889.1	Lock nut M8	7	
14	GB/T 6170	Nut M8	3	
15	GB/T 5783	Bolt M8×70	1	
16	GB/T 5783	Bolt M10×40	4	
17	GB/T 882	Pin B14×40	1	
18	GB/T 97.1	Plain washer 14	7	
19	GB/T91	Split pin 4x25	4	
20	LSM-22T-01-112	Short threaded rod	1	Color zinc plating
21	LSM-22T-01-119	Control valve spacer	1	Color zinc plating
22	GB/T 5783	Bolt M10×90	1	
23	LSM-22T-01-105	Connecting arm	1	
24	GB/T 70.1	Bolt M8×70	2	
25	GB/T 97.1	Plain washer 8	10	
26	MD40-MW1	Directional valve	1	
27	QUQ1	Hydraulic air filter	1	
28	LSM-22T-01-011	The main frame welding	1	
29	LSM22T-GYJ-M18X1.5	Oil sight mirror	1	

30	LSM-22T-01-111	Cylinder lock hook	2	Color zinc plating
31	LSM-22T-04-011	Cylinder	1	
32	GB/T 5783	Bolt M14×55	2	
33	GB/T 889.1	Lock nut M14	2	
34	GB/T 5782	Bolt M12×60	1	
35	LSM-22T-01-013	Upper junction plate welding	1	
36	LSM-22T-01-115	Small pressure spring	2	Color zinc plating
37	LSM-22T-01-014	Right handle welding	1	
38	GB/T 889.1	Lock nut M16	2	
39	GB/T 5783	Bolt M8×120	1	Full Thread
40	LSM-22T-01-123	Hand grip	2	
41	LSM-22T-01-102	Handle	1	
42	DK2000-139	Handle sleeve	1	
43	LSM-22T-01-122	Carrying zipper	1	
44	LSM-22T-01-103	Pull rod	1	Color zinc plating
45	GB/T 5783	Bolt M12×40	2	
46	GB/T 97.1	Plain washer 12	7	
47	GB/T 889.1	Lock nut M12	4	
48	LSM-22T-01-104	Connecting rod	1	
49	GB/T 5783	Bolt M10×30	3	
50	LSM-22T-01-012	Right guard tube welding	1	
51	GB/T 97.1	Plain washer 16	2	
52	GB/T 5782	Bolt M16×100	1	
53	LSM-22T-01-101	Protective tube hook	1	
54	LSM-22T-01-116	Torsion spring	1	Color zinc plating
55	GB/T 5782	Bolt M12×55	1	
56	LSM-22T-01-106	Limit rod	1	Color zinc plating
57	LSM-22T-01-015	Limit folding plate welding	2	
58	DK2000-MHM8x25	Plum bakelite bolt	2	
59	GB/T 5783	Bolt	2	
60	LS-22T-115		1	
61	ZHD-18	Combination pad 18	1	
62	EFK190.027	Upper suspension pin	1	Borrowed parts

63	EFGC175.130	R Pin $\phi 3$	4	
64	EFGC175.129	Lock pin 12	2	
65	AG170.104	Lower suspension pin	2	
66	EFGC175.123	PTO shield	1	
67	LSM-22T-01-109	Left guard	1	
68	EFGC175.115	Brace pin	1	Color zinc plating
69	LSM-22T-01-114	Left pressure spring	1	Color zinc plating
70	LSM-22T-01-108	Rotary shaft eccentric sleeve	1	Color zinc plating
71	LSM-22T-01-117	Transmission arm	1	
72	GB/T 78	Hexagon socket taper set screw M10 $\times$ 16	1	
73	LSM-22T-01-125	Positioning sleeve	1	Color zinc plating
74	GB/T 78	Hexagon socket taper set screw M12 $\times$ 60	1	
75	LSM-22T-01-110	Prickly claw	1	
76	LSM-22T-01-018	Left handle welding	1	
77	LSM-22T-01-118	Long tension spring	1	Color zinc plating
78	GB/T 5783	Bolt M10 $\times$ 25	4	
79	GB/T 96.1	Big Plain washer 10	4	
80	GB/T 93	Spring lock washer 10	4	



LSM-22T-03-001



<b>LSM-22T-03-001</b>				
<b>No.</b>	<b>Part No.</b>	<b>Name &amp; Specification</b>	<b>Q'ty</b>	<b>Remarks</b>
1	LSM-22T-03-012	4 - partial cross ax	1	
2	EFGC175.130	R pin 3.5	1	
3	LSM-22T-03-108	Cutting knife pin	1	Color zinc plating
4	LSM-22T-03-011	Cutter welding	1	
5	LSM-22T-03-103	Partition	2	
6	JB/T 7940.1	Oil cup M8×1	2	
7	LSM-22T-03-105	Small sheet copper	4	
8	LSM-22T-03-106	Compression plate	2	
9	LSM-22T-03-107	Hanger plate	1	
10	GB/T 5783	Bolt M14×55	4	
11	GB/T 93	Spring lock washer 14	8	
12	GB/T 97.1	Plain washer 14	10	
13	GB/T 5783	Bolt M14×60	4	
14	LSM-22T-03-109	Spacing board	1	
15	LSM-22T-03-104	Backing plate	2	
16	LSM-22T-03-101	Cutter pin	1	Color zinc plating
17	GB/T91	Split pin 4x25	2	
18	GB/T 5783	Bolt M12×35	1	